

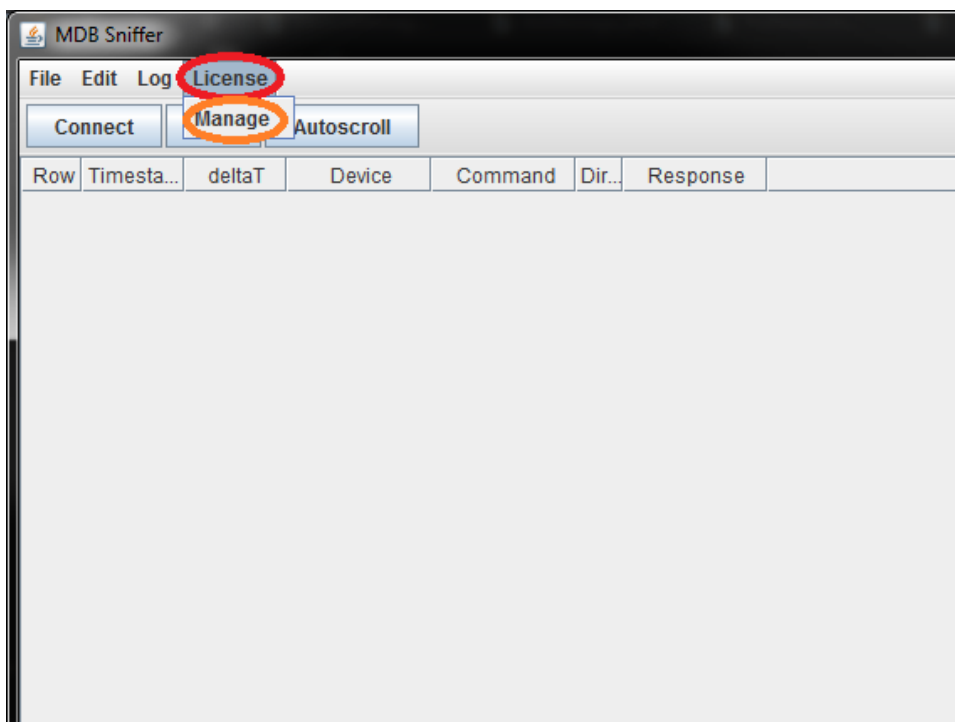
QUICKSTART GUIDE:

1. Connect the Qibixx MDB-USB Interface through USB to your computer.
2. Start the MDB Toolchest application.
3. Getting MDB-USB Interface's ID (Skip this step if you already have a license key):
 1. Connect to the device by pressing "Connect" button on the top toolbar.
 2. The ID is displayed on the bottom left corner of the window.

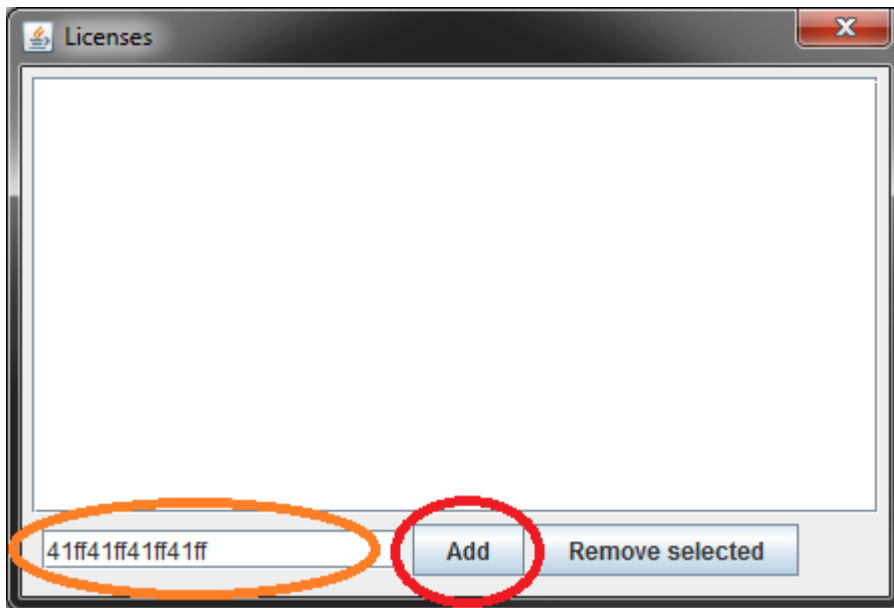
315	276767...	0.5ms	CHNGR	POLL	▶		
316	276773...	62.5ms			◀	ACK	
317	276773...	0.5ms	COMM ...	POLL	▶		
318	276783...	97.5ms			◀	ACK	
319	276783...	1.0ms	CASHL...	POLL	▶		
Connected VER:v1.2.0. ID:31ffd3054d4d393143520243 NO LICENSE							

4. Adding license:

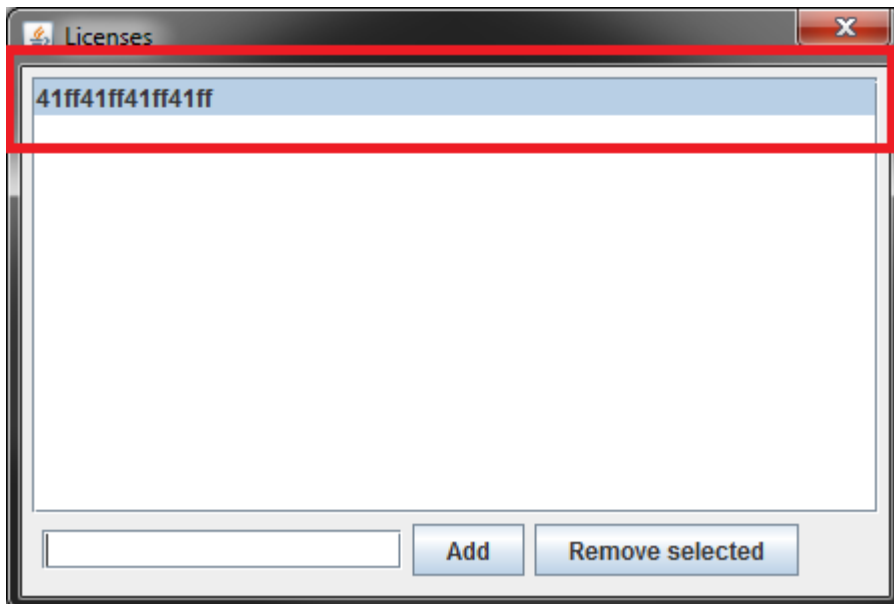
1. In the menu bar on top select "License" and then "Manage", this will open a dialog where you can add license keys.



2. Input your license key* to the bottom text field and click on "Add".



3. Now your license key should be visible on the list as shown on picture.



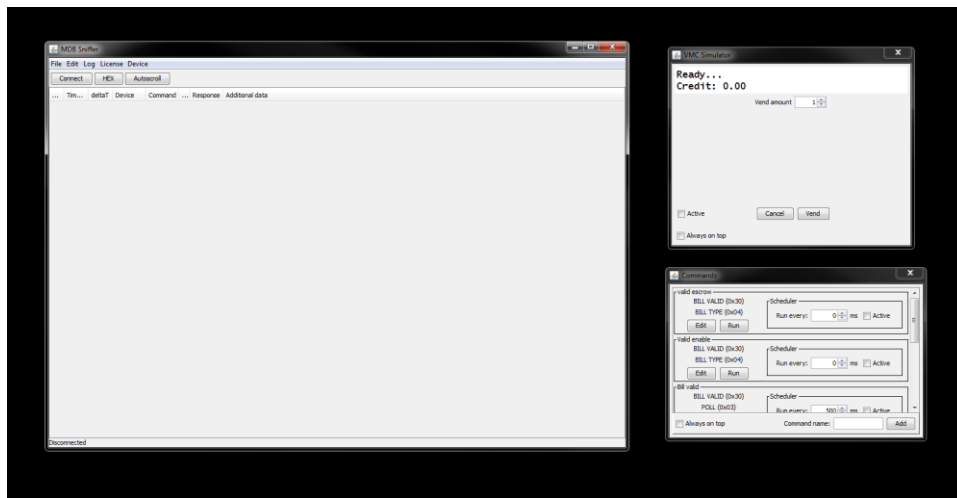
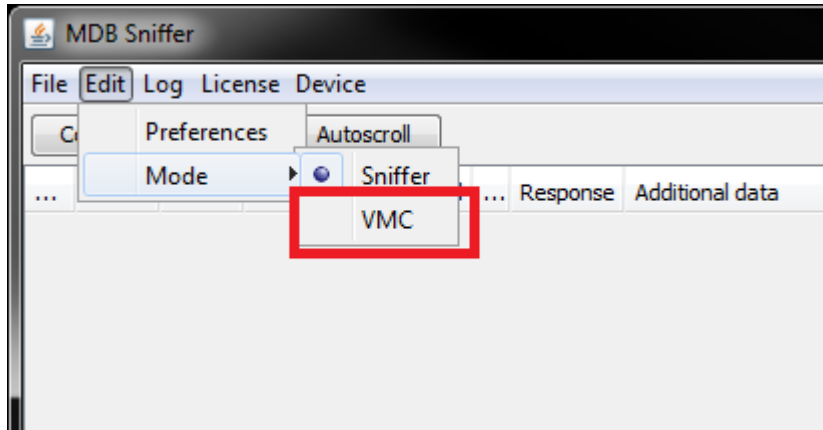
*Note: You can add as many license keys as you want, if you are using the software with multiple MDB-USB Interfaces.

5. Now, with added license key, you can use MDB Toolchest without any restrictions, it's as simple as clicking on the "Connect" button located in the top toolbar.

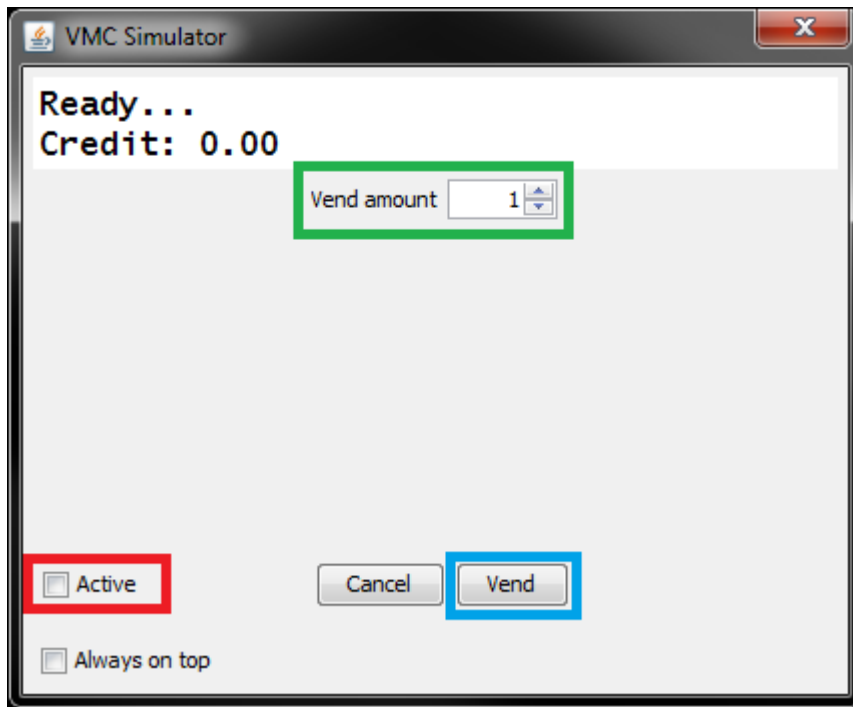
6. **Using MDB Toolchest as a VMC:**

MDB Toolchest also includes lightweight VMC Simulator with support for Bill validator, Coin changer, Cashless device and easy to use command builder to send custom commands to peripherals.

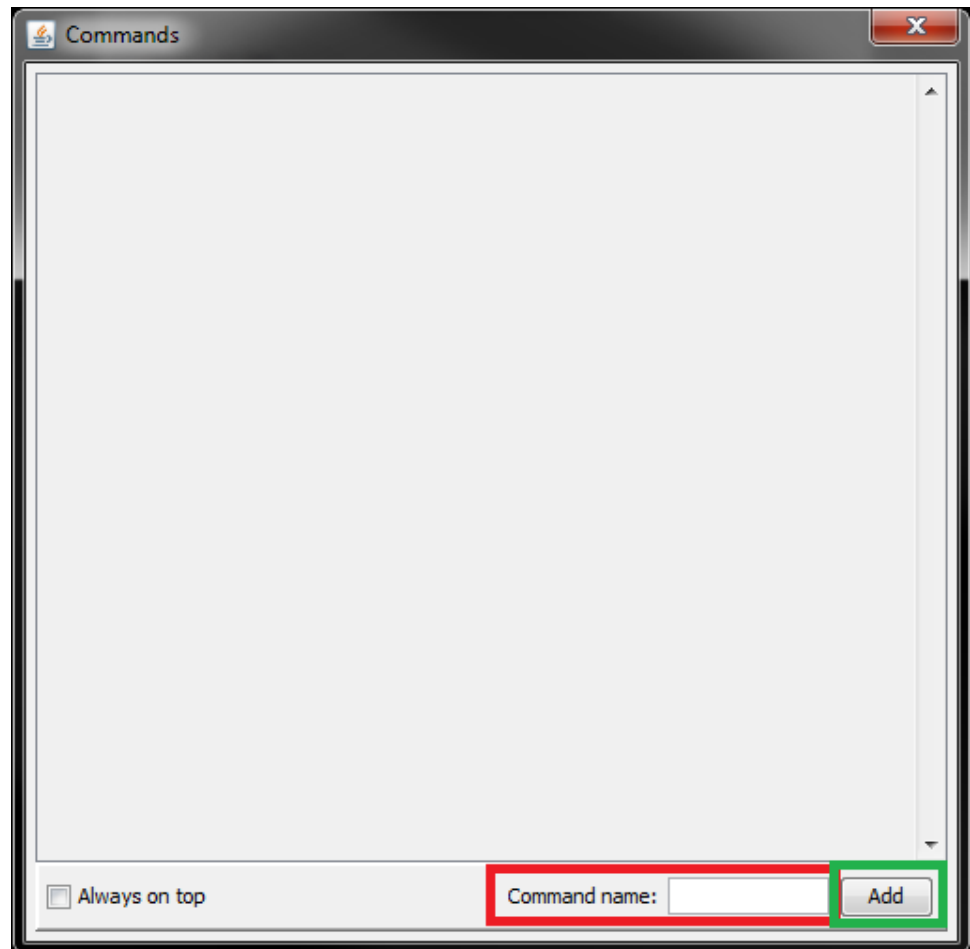
1. Switch application mode to VMC in Edit > Mode > VMC. Note that 2 additional windows will be opened. First is used for VMC Simulation and the second is used for sending custom commands.



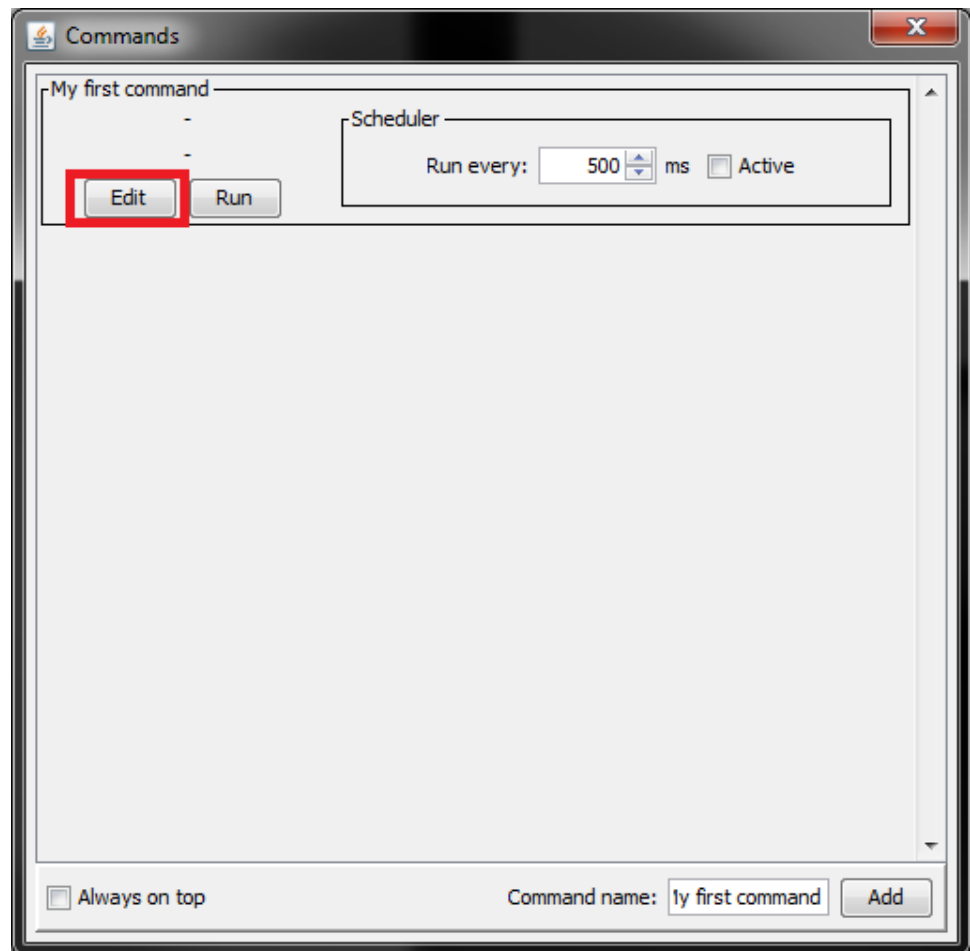
2. Connect to interface using "Connect" button. Note that you can also switch modes if you are already connected, application automatically reconnects.
3. Now you can activate the VMC Simulator and you will see all the data flowing in a main table just like in sniffer mode. You can put money in and vend a product/cancel the vend during the process.



4. Sending custom commands through "Commands" dialog.
 1. Add the new command to the list on the bottom right corner, you can also give the command some fancy name.



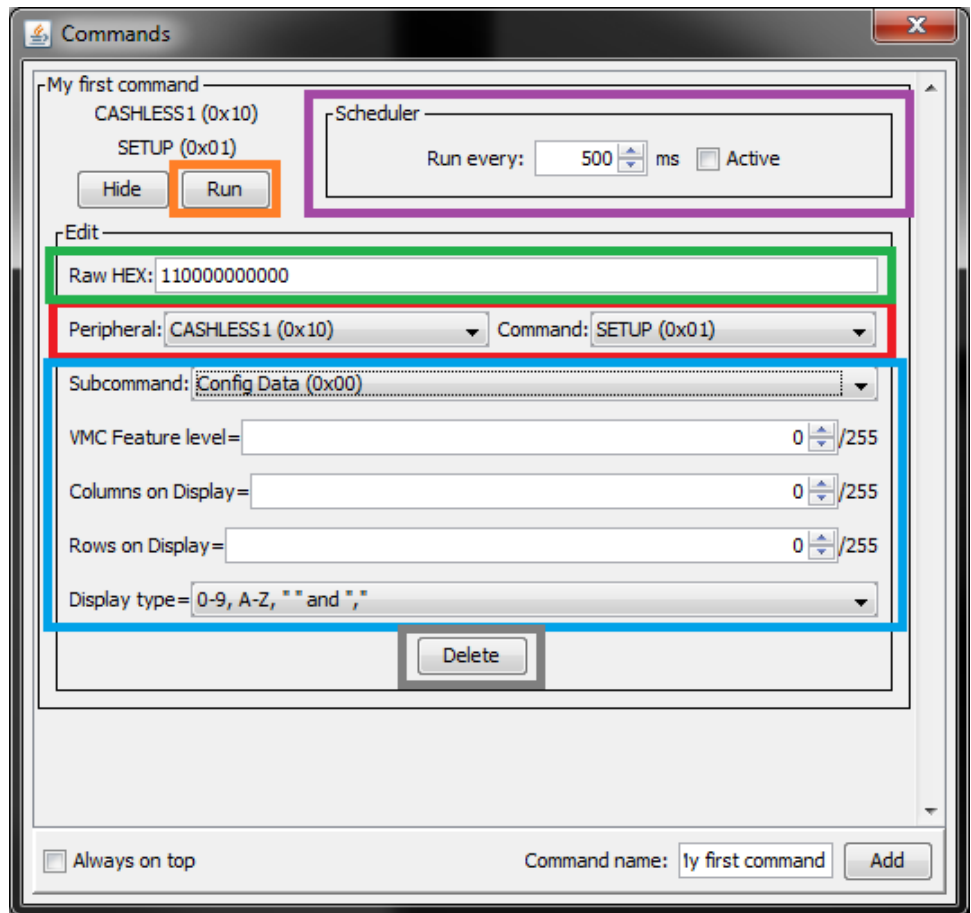
2. You can edit your newly added command now by clicking on “Edit” button.



3. The edit pane will pop up and here you can:

- Edit the command with **HEX Editor**
- Select **peripheral and command** to send – **the bottom** will be automatically populated with all the configuration available for the selected command
- **Delete** the command

You can also use the buttons on top to Run the command or schedule it to run every x seconds in **Scheduler panel**.



Saving and opening saved files:

Saving*:

To save the current captured data, navigate to File > Save As or use key accelerator Ctrl+Shift+S and select the file you want to save to. After you specified the file location you can use File > Save or Ctrl+S to save it to currently selected file.

*Note: Saving functionality is disabled without correct license key.

Opening:

To open the file navigate to File > Open or Ctrl+O, and select the file you want to open.

Importing BonusData files and logging:

Import:

Go to File > Import ANL or Ctrl+I select the BonusData file you want to import (*.anl) and click on open.

Logging:

To start logging, navigate to Log > Start logging, when you do this first time, you will need to select the file* you want to log to, you can further change the file in Log > Change output file.

There is also a possibility to log in Hexadecimal (Unparsed raw data) by checking the Log > Hex output checkbox.

To stop logging click on Log > Stop logging.

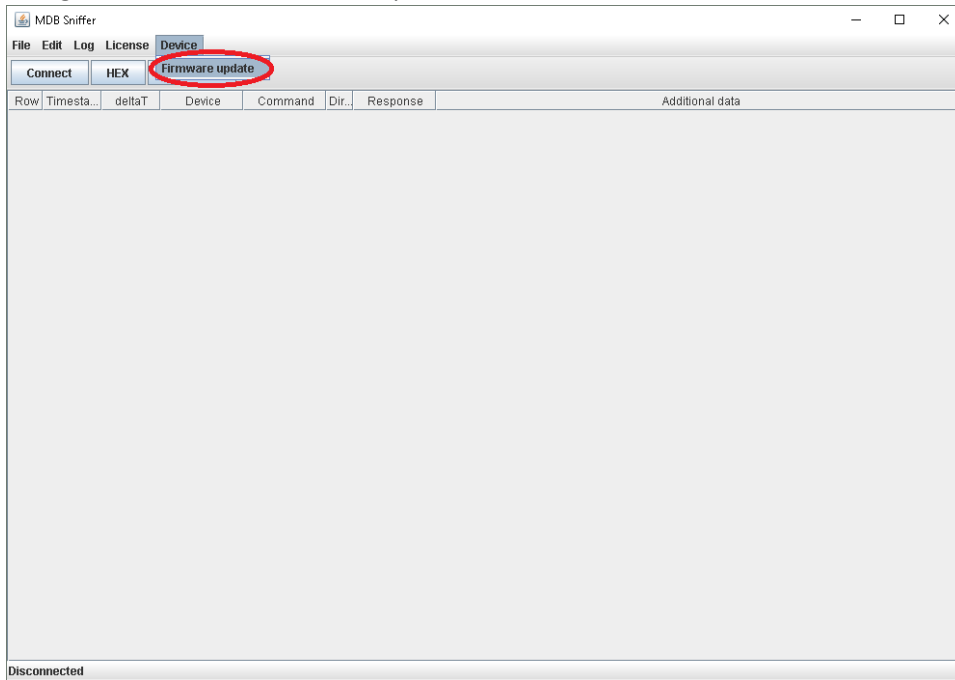
*Note: If you select existing file, its content won't be erased, the new log data will be just appended to the end of the file.

Changing colours:

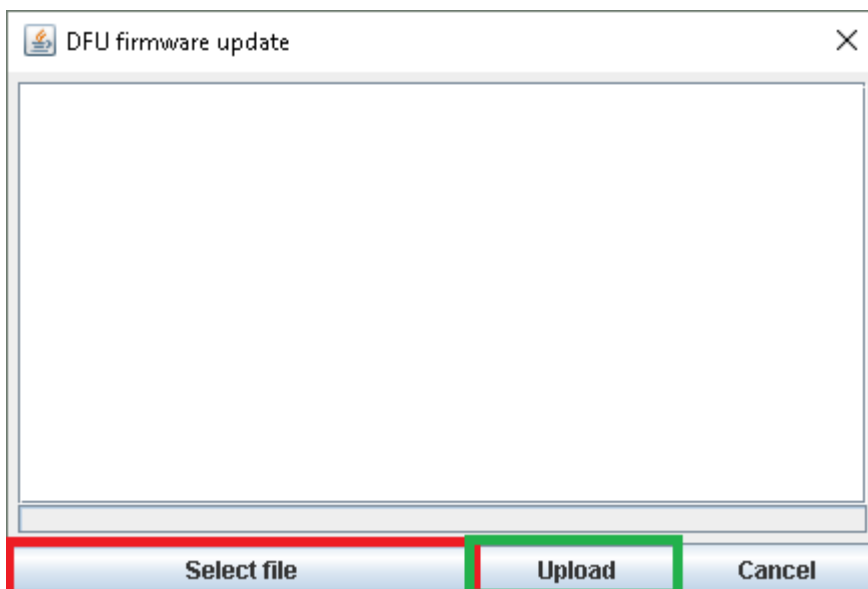
You can personalize the MDB Toolchest by choosing the foreground and background colour of in/out/ack/nack packets. Simply navigate to Edit > Preferences and change it from there.

Firmware update:

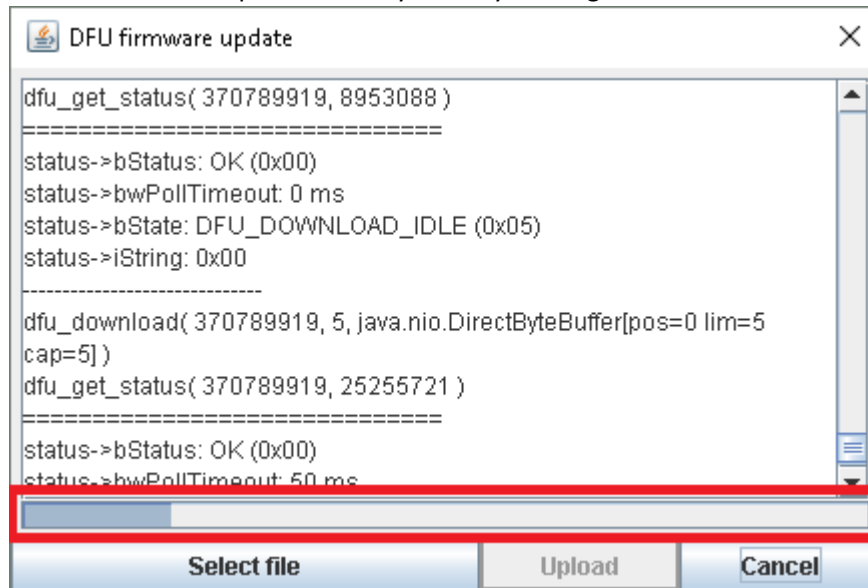
1. Navigate to Device > Firmware update.



2. The dialog should pop-up. Select the file first with **"Select file"** button on the left side and then upload it to the device with **"Upload"** button.



- The application will start to download the data into the device. The progress bar on bottom should start to fill up. And you should see some output in the text field placed above it. You can cancel this process at any time by clicking on "Cancel" button



- The application successfully downloaded new data into the device. This is indicated by "DOWNLOAD FINISHED!" message. You can now close the dialog and connect to the MDB-USB Interface as usual.

